

Clarke®



MITRE SAW STAND

MODEL NO: CMSS

PART NO: 6500966

ASSEMBLY INSTRUCTIONS

ORIGINAL INSTRUCTIONS

LS0817 - ISS 1

INTRODUCTION

Thank you for selecting this Clarke Mitre saw stand.

Read this manual before use, the warnings and cautions in this manual will help you operate the mitre saw stand safely.

GUARANTEE

This product is guaranteed against faulty manufacture for a period of 12 months from the date of purchase. Please keep your receipt which will be required as proof of purchase.

This guarantee is invalid if the product is found to have been abused or tampered with in any way, or not used for the purpose for which it was intended.

Faulty goods should be returned to their place of purchase, no product can be returned to us without prior permission.

This guarantee does not effect your statutory rights.

SAFETY PRECAUTIONS

1. This mitre saw stand has a **maximum load capacity of 150 kg** which must not be exceeded.
2. Do not stand on top of the mitre saw stand.
3. Take care when placing a load on to the mitre saw stand, it should be placed gently so that the strain is taken up gradually. Do not drop a load carelessly.
4. Always check the mitre saw stand for damage before use.
5. Always ensure you are working on a firm flat stable surface.

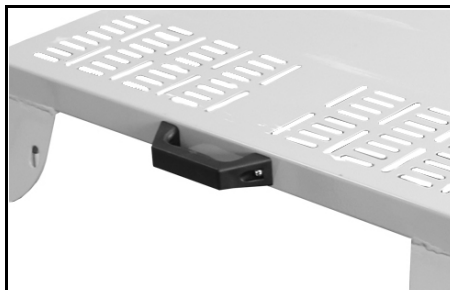
SPECIFICATIONS

Dimensions L x W x H	1000 x 1100 x 700-1005 mm
Maximum Load	150 kg

ASSEMBLY

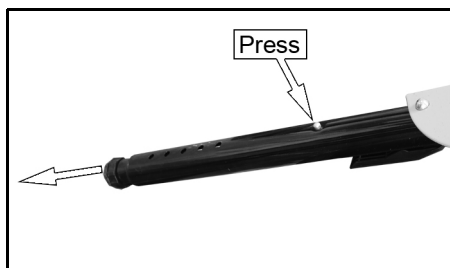
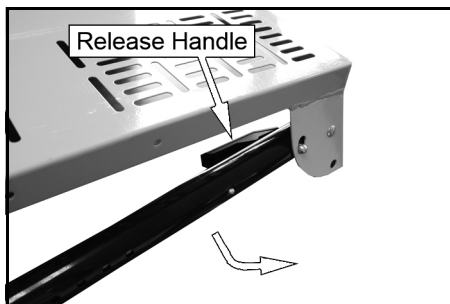
1. Screw the handle onto the table using the screws provided.

NOTE: Folded legs not shown for clarity.



OPENING/CLOSING THE MITRE SAW STAND

1. Squeeze and hold the release handle.
2. Swing the leg into position and let go of the release handle.
 - The leg should lock into place.
3. Press the locking pin shown and pull the leg to the desired height.
 - The locking pin must lock into one of the holes on the leg.
 - Make sure that the same hole is used on each leg.
 - On one of the legs, the foot can also be adjusted as required.
4. Repeat steps 1 to 3 with the remaining legs.
5. Test the stability of the table before use.



ATTACHING THE MITRE SAW

1. Place the mitre saw in the middle of the table and secure to the table using the fixings supplied.

A SELECTION FROM THE VAST RANGE OF

Clarke®

QUALITY PRODUCTS

AIR COMPRESSORS

From DIY to industrial, Plus air tools, spray guns and accessories.

GENERATORS

Prime duty or emergency standby for business, home and leisure.

POWER WASHERS

Hot and cold, electric and engine driven - we have what you need

WELDERS

Mig, Arc, Tig and Spot. From DIY to auto/industrial.

METALWORKING

Drills, grinders and saws for DIY and professional use.

WOODWORKING

Saws, sanders, lathes, mortisers and dust extraction.

HYDRAULICS

Cranes, body repair kits, transmission jacks for all types of workshop use.

WATER PUMPS

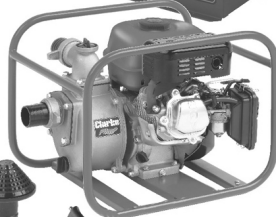
Submersible, electric and engine driven for DIY, agriculture and industry.

POWERTOOLS

Angle grinders, cordless drill sets, saws and sanders.

STARTERS/CHARGERS

All sizes for car and commercial use.



PARTS & SERVICE: 0208 988 7400
E-mail: Parts@clarkeinternational.com or Service@clarkeinternational.com
SALES: UK 01992 565333 or Export 00 44 (0)1992 565335

Clarke® INTERNATIONAL Hemnall Street, Epping, Essex CM16 4LG
www.clarkeinternational.com